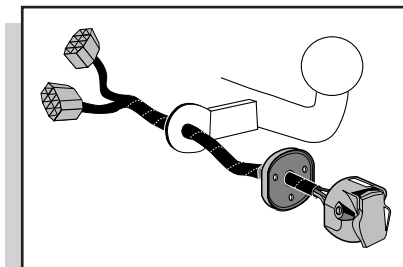


**Montage-handleiding elektrokabelset voor  
trekhaak met 12-N contactdoos  
vlg. DIN/ISO norm 1724**

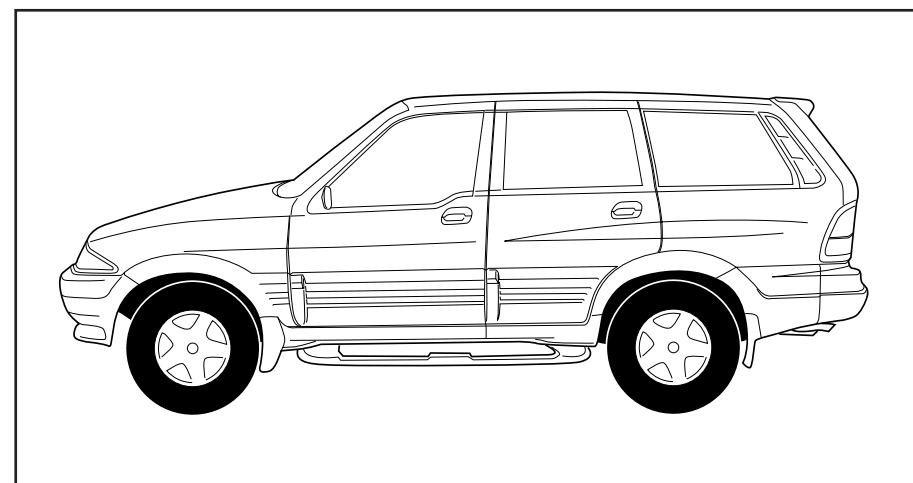
**Fitting instructions electric wiringkit  
towbar with 12-N socket up to  
DIN/ISO norm 1724**

**Einbauanleitung Elektrosatz  
Anhängervorrichtung mit 12-N Steckdose  
lt. DIN/ISO Norm 1724**

**Instructions de montage du faisceau  
électrique pour crochet d'attelage  
conforme à la norme DIN/ISO 1724  
prise 12-N**

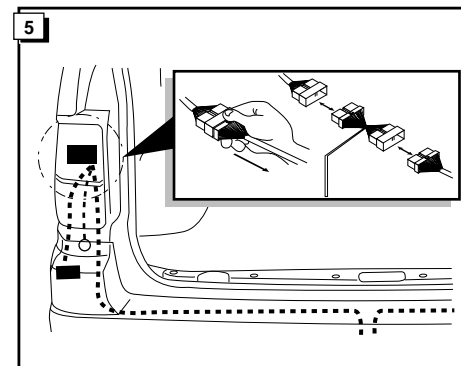
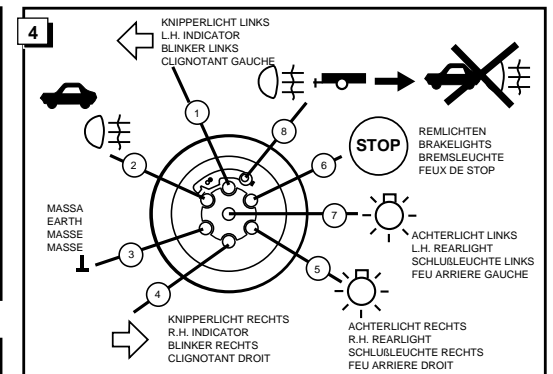
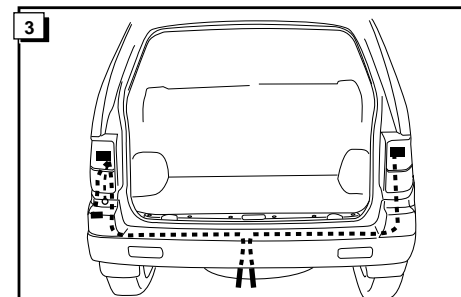
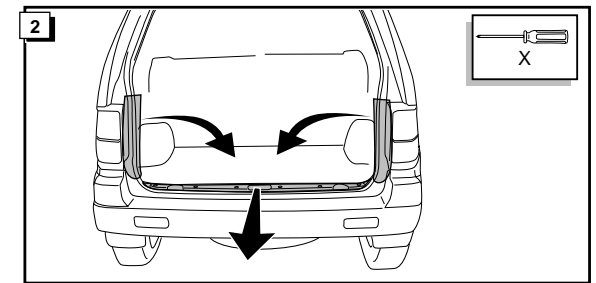
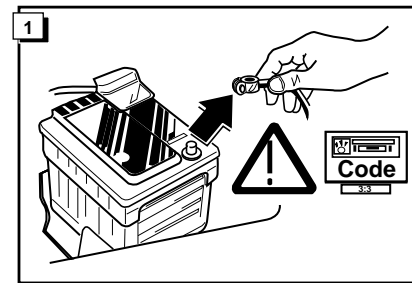
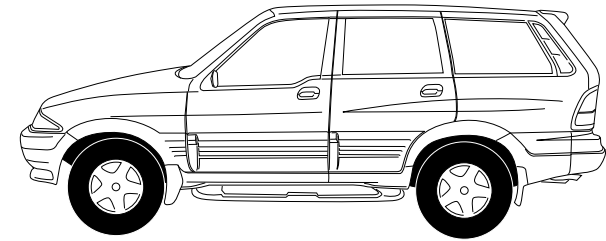


**Ssang Yong Musso 1995-  
+ Musso 2001-**



**Bestel Nr.: SAN-003-B**





|        | NL    | UK     | D       | F      |
|--------|-------|--------|---------|--------|
| 1/L    | GEEL  | YELLOW | GELB    | JAUNE  |
| 2/54-G | BLAUW | BLUE   | BLAU    | BLEU   |
| 3/31   | WIT   | WHITE  | WEIß    | BLANC  |
| 4/R    | GROEN | GREEN  | GRÜN    | VERT   |
| 5/58-R | BRUIN | BROWN  | BRAUN   | MARRON |
| 6/54   | ROOD  | RED    | ROT     | ROUGE  |
| 7/58-L | ZWART | BLACK  | SCHWARZ | NOIR   |
| 8/58-B | GRIJS | GREY   | GRAU    | GRIS   |

